

Barrow & Byrd Properties, Inc.
22 West Main Street
P.O. Box 72
Butler, Georgia 31006
478-862-5656
www.barrow-byrd.com

111.674 Acres of Excellent Hunting Land in Macon County, Georgia
\$1,695.00 per acre

Description: 111.674 acres located in Land Lot 27 of the 1st Land District of Macon County, Georgia

Location: Hwy 90 out of Montezuma towards Ideal – 3 miles – left on Blanks Road – property begins on the right

Access: Paved County Road – Griffin Road

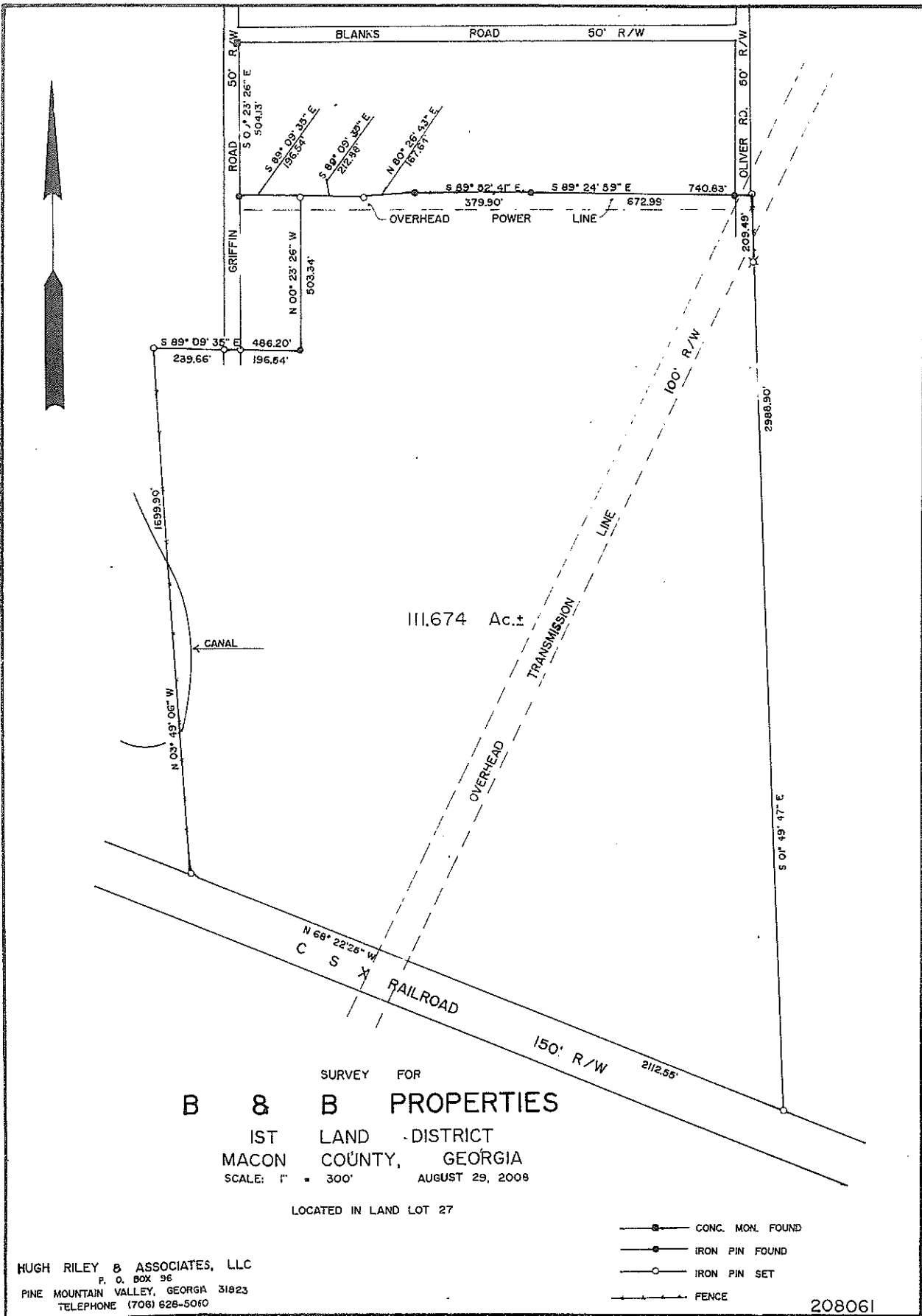
Water Access: Springs and Small Creek

Topography: Gentle Roll

Timber: Natural Pine and Hardwood and Small Pine Plantation

Utilities: All utilities available

Highest and Best Use: Excellent Hunting Opportunities – Power Lines traverse the property and make excellent spots for food plots!



SURVEY FOR
B & B PROPERTIES
 1ST LAND DISTRICT
 MACON COUNTY, GEORGIA
 SCALE: 1" = 300' AUGUST 29, 2008
 LOCATED IN LAND LOT 27

- CONC. MON. FOUND
- IRON PIN FOUND
- IRON PIN SET
- +— FENCE

HUGH RILEY & ASSOCIATES, LLC
 P. O. BOX 96
 PINE MOUNTAIN VALLEY, GEORGIA 31823
 TELEPHONE (706) 626-5060

208061

THE FIELD DATA UPON WHICH THIS MAP OR PLAT IS BASED HAS A CLOSURE PRECISION OF ONE FOOT IN 28,000 FEET AND AN ANGULAR ERROR OF 00"00" PER ANGLE POINT, AND WAS ADJUSTED USING COMPASS RULE. THE LINEAR AND ANGULAR MEASUREMENTS WERE MADE WITH A TOPCON GTS-223 ELECTRONIC TOTAL STATION. THIS MAP OR PLAT HAS BEEN CALCULATED FOR CLOSURE AND IS FOUND TO BE ACCURATE WITHIN ONE FOOT IN 500,000 FEET.

IN MY OPINION THIS PLAT IS A CORRECT REPRESENTATION OF THE LAND PLATTED AND HAS BEEN PREPARED IN CONFORMITY WITH THE MINIMUM STANDARDS AND REQUIREMENTS OF LAW

THIS PLAT IS NOT LOCATED WITHIN A 100 YEAR FLOOD HAZARD AREA, UNLESS SHOWN AS ZONE A.

