

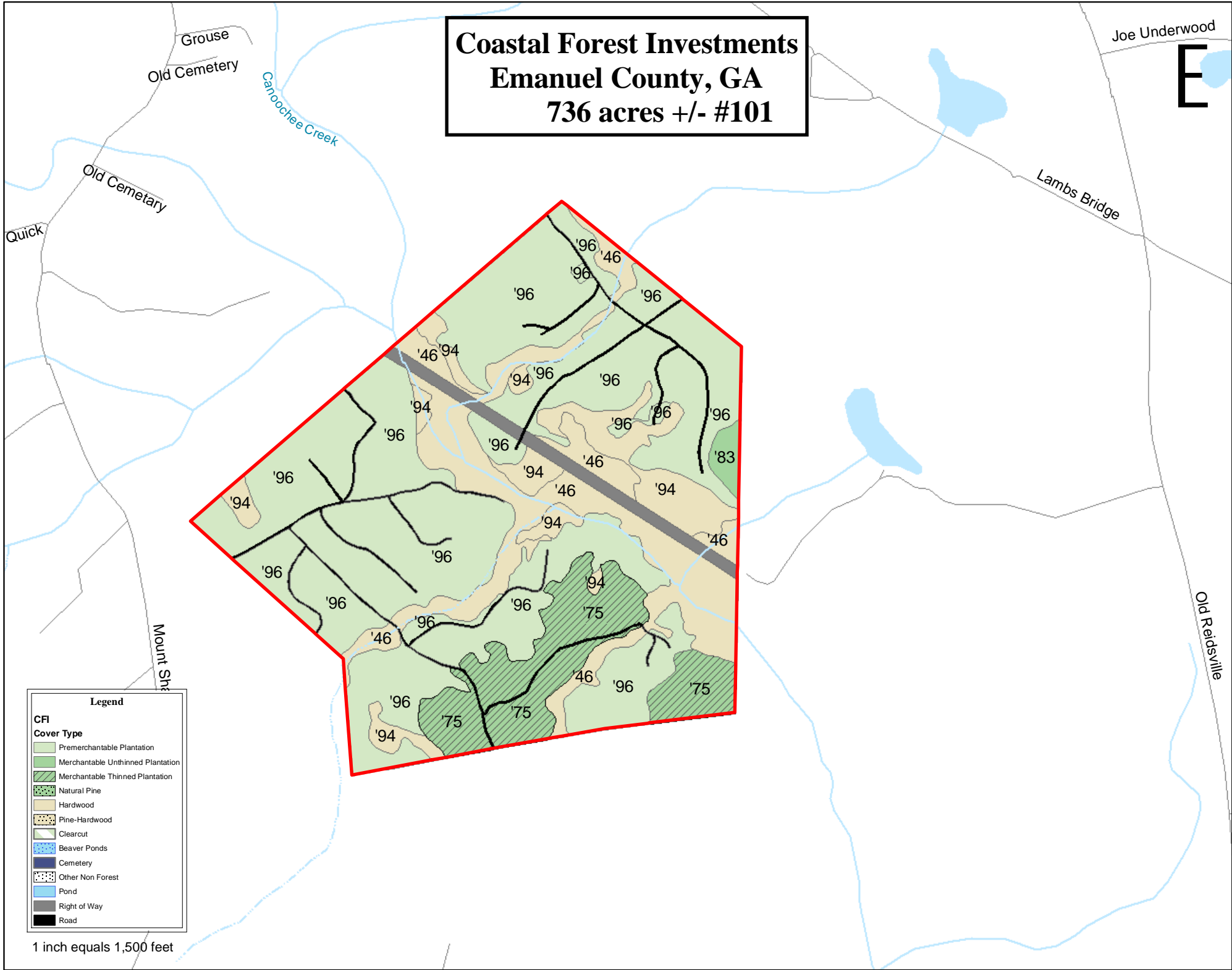
**Coastal Forest Investments
Emanuel County, GA #101**



1 inch equals 1,320 feet

Coastal Forest Investments Emanuel County, GA 736 acres +/- #101

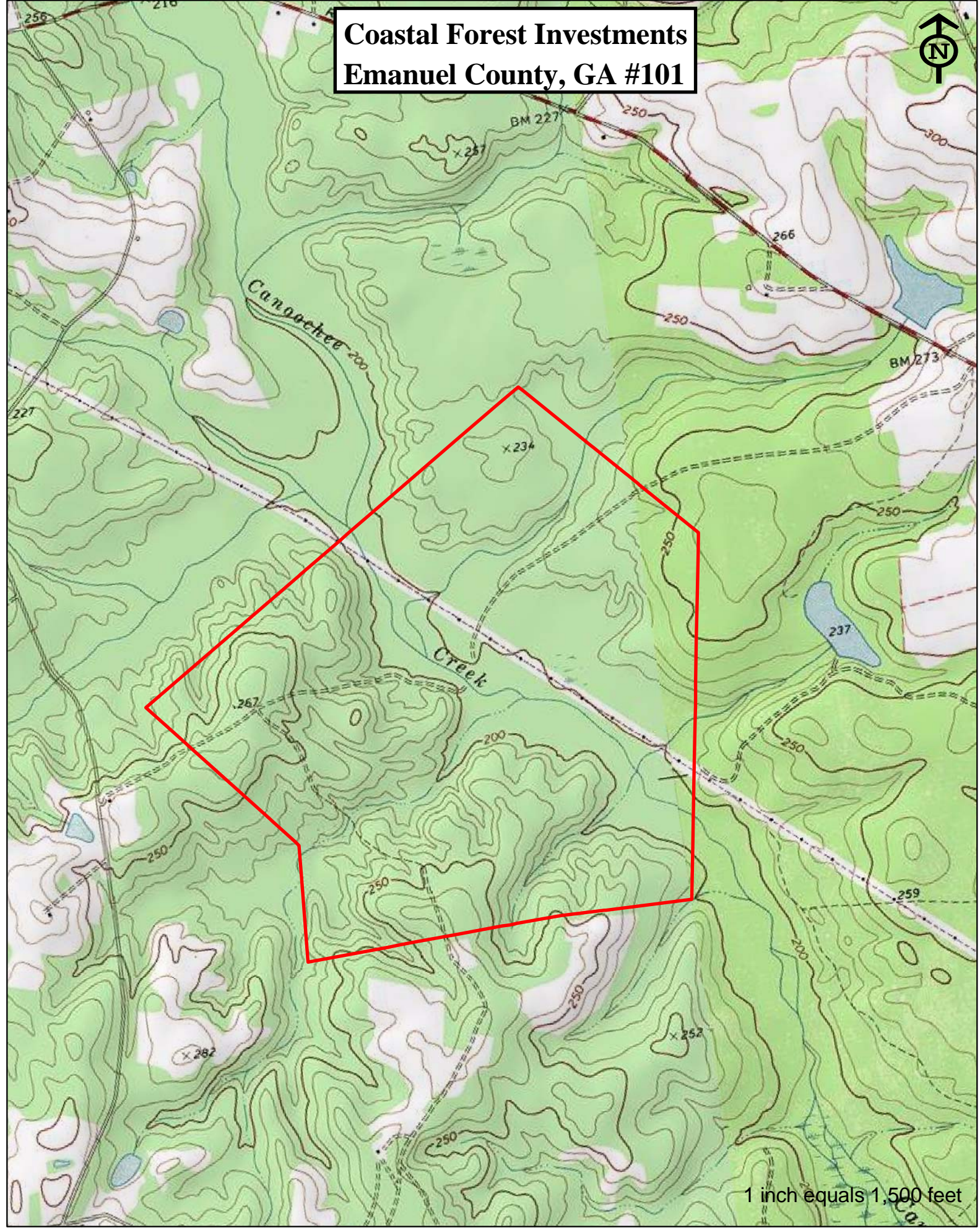
E



Legend	
CFI	
Cover Type	
	Premerchtable Plantation
	Merchantable Unthinned Plantation
	Merchantable Thinned Plantation
	Natural Pine
	Hardwood
	Pine-Hardwood
	Clearcut
	Beaver Ponds
	Cemetery
	Other Non Forest
	Pond
	Right of Way
	Road

1 inch equals 1,500 feet

**Coastal Forest Investments
Emanuel County, GA #101**



1 inch equals 1,500 feet

**Exhibit 1
Tract 101**

Land

Type	Acres
Pine	522
Hardwood/SMZ	179
Non-forest	35
Fee Total	736

Premerchantable Pine Plantations

Year Planted	Age Class	Acres
Clearcut	0	0
Timber Deed	0	85
2006	0	0
2005	1	0
2004	2	0
2003	3	0
2002	4	0
2001	5	0
2000	6	0
1999	7	0
1998	8	0
1997	9	0
1996	10	431
1995	11	0
1994	12	0
1993	13	0
1992	14	0
Fee Premerch		431

Merchantable Timber (Stands 15+ yrs)

Product	Volume (Tons)
Pine Sawtimber	2,172
Pine Chip-n-saw	0
Pine Poles	0
Pine Pulpwood	371
Pine Topwood	126
Hdwd Sawtimber	1,542
Hdwd Pulpwood	11,104
Total Merchantable	15,315